



HEC LIÈGE WITHIN THE UNIVERSITY OF LIÈGE



11 Faculties



4 campuses



28,064 students and PhD students



192 masters



1.045 partner institutions



More than 97,900 graduates



5,633 staff members



2,281 research agreements



460 million euro annual budget



HEC LIÈGE AT A GLANCE

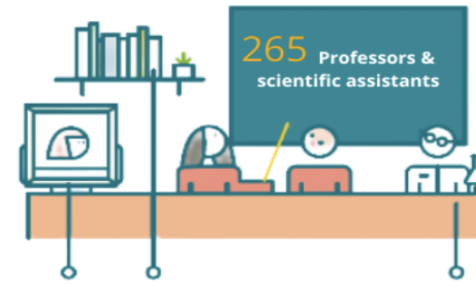
Our students

3.477 Students
72 Nationalities



31%
of international students
enrolled in our Masters

Professors, assistants & researchers



77 supervisory and management staff
8 research areas
149 Researchers and PhD candidates

Education in Management and Economics



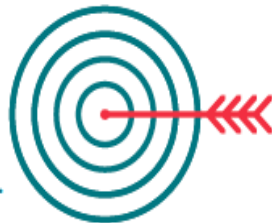
F&F1

- **2 bachelors** (Economics and Management | Business Engineering) and the possibility of an international course with a triple degree
- **4 Master's degree** (Economics | Management | Business Engineering | Sales management) divided in a number of specialized fields such as finance, marketing, economics, logistics, law, human resources, management of sustainable enterprises, etc.
- **4 transdisciplinary Master's degree** (Law-Management | Management of Organizational Systems in Transition (MOST) | Industrial & Business Engineering | Digital business) : allow students to obtain 2 master's degrees at the end of 6 years of study.
- **Specialised Masters** daytime & part-time study (including HEC Entrepreneurs Entrepreneurs)
- **A Doctoral School**
- **MBA programs** in Belgium, Casablanca, Kinshasa and Luxembourg

OUR VISION, OUR MISSION, OUR VALUES

MISSION

HEC Liège promotes teaching and research in economics and management in real life, for the benefit of our local community and society in general.



VISION

HEC Liège is a central hub from which we share and transfer our internationally recognized skills, research and expertise to students, our local community and our international partners.



VALUES



HEC LIÈGE INTERNATIONALLY ACCREDITED



OUR PROGRAMS

2 Bachelors:
Economics & Management
Business Engineering

4 Masters :
Management
Business Engineering Economics
Alternating Master in Sales
Management

4 Transdisciplinary Masters

Specialised Masters

Master Erasmus Mundus

A Doctoral School

4 international MBA

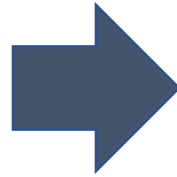


OUR TRANSVERSAL AXES

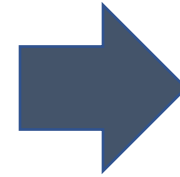
Societal Transformation



Digital



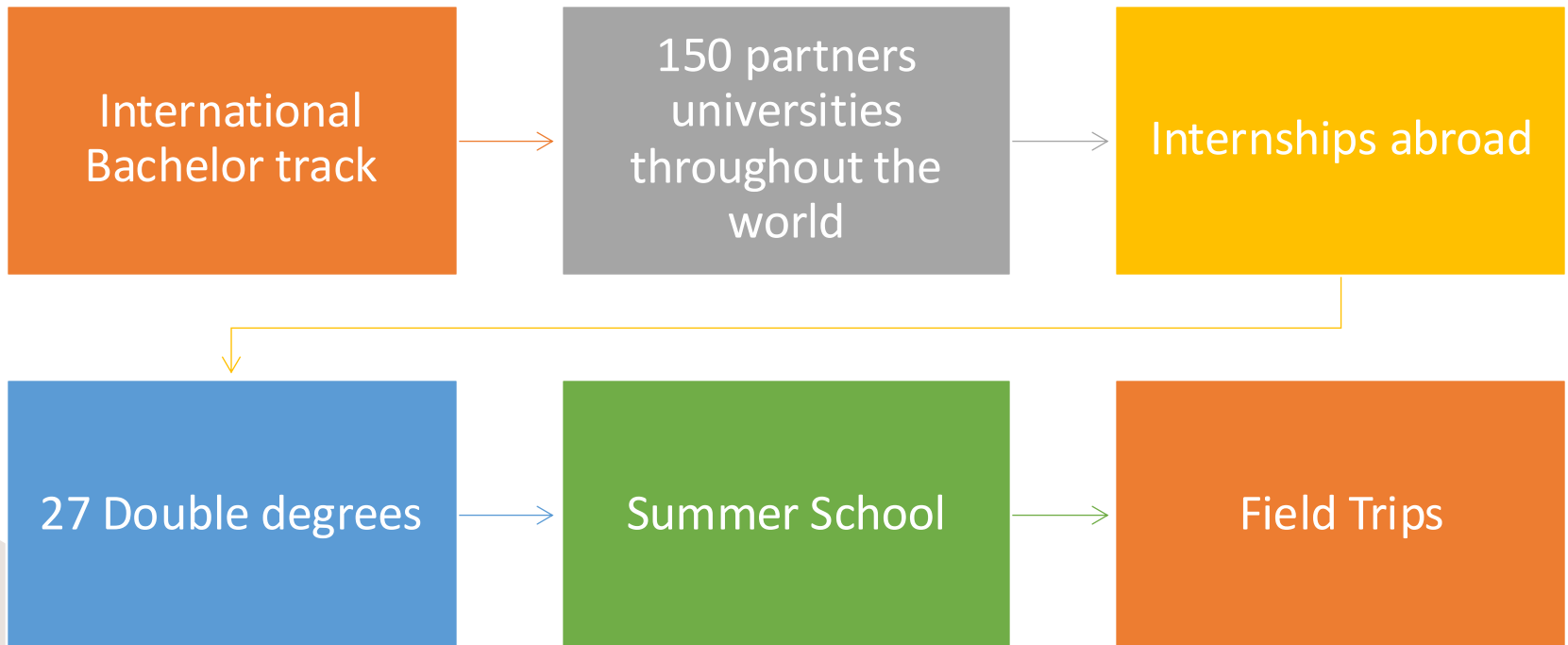
Entrepreneurship



Sustainability/Ethics



INTERNATIONAL



HEC LIEGE RESEARCH

More than 110 FTE researchers (faculty, senior and junior scientists) who are active in various fields of economics and management science.

4 strategic objectives to target excellence in research:

- To deliver high-quality research results
- To develop an international reputation for the quality of its research
- To be internationally recognized for its economic and societal impact
- To train and educate qualified and productive scientists

« HEC Research aims to foster active interdisciplinary collaborations around three transversal themes – digital transformation, sustainability, and entrepreneurship - in order to generate transformative research with high impact on HEC strategic research fields and with a concrete influence on the socio-economic environment of the school »

Laurence DESSART,



EFMD
ACCREDITED



HEC LIEGE RESEARCH



7 strategic research fields where the School has significant experience and a critical mass of researchers, publications, teaching and corporate collaborations

AN ANCHORING IN THE ECONOMIC WORLD



PARTNERSHIP WITH COMPANIES:



5 Academic chairs



58 partner companies



More than 100 companies affiliated
to the Group for HEC Liège



361 internships, including 125
abroad



A LARGE NETWORK OF COMPANIES & COLLABORATIONS ...



Donors & Partners



Knowledge Partners



Project Partners



Business Spirit Partners

- Business Cases
- Guest speakers
- Career Days
- Internships



A UNIQUE GOVERNANCE MODEL

Involvement of companies in HEC Liège's management bodies:

The School Board: in charge of strategic choices, budget and programs

The Governance Council: assists in the strategic positioning of the school and the search for financial resources

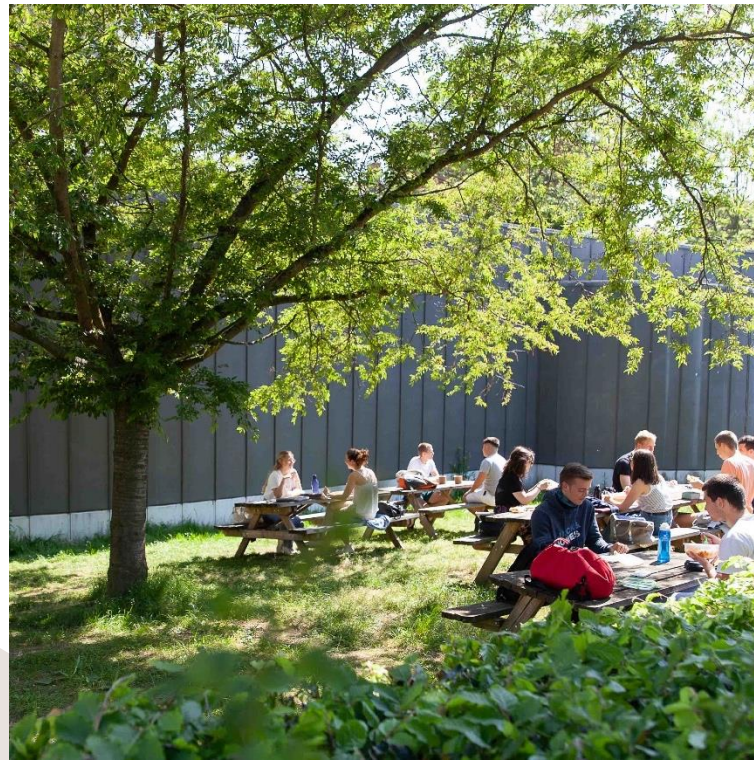
The Group for HEC Liège: composed of representatives of local companies, acting as a link between the School and the business world.



A NEW CAMPUS FOR A BIGGER IMPACT

1.6 hectares in the heart of Liège









Comfortable
classrooms with
modern equipment



JARDIN BOTANIQUE



Our Park next to Campus Louvrex



SART-TILMAN CAMPUS (B31, B33, B4, ...)



ULiege larger campus
30 min. by bus
Wooden area



SART-TILMAN CAMPUS (B31, B33, B4, ...)

RESTAURANT



LIBRARY



ESN HEC & ESN ULIÈGE



- Student associations dedicated to international students
- Pick up service at the station
- Welcome and guidance upon arrival
- Housing service
- Parties and City trips (Paris, Berlin, seaside) and lots of fun!



ESN HEC & ESN ULIÈGE



Instagram : ESN.HEC



ULIÈGE ACTIVITIES

- Orientation Days : Mid September and end of January
<http://www.enseignement.uliege.be/en/erasmus-in-welcome-days>
- Buddy system
- Discovery of Liege, traditional meal
- Movies, Theater
- Visit of a chocolate factory
- And more...



ACCOMMODATION – CITY CENTER

Generation Campus by Eckelmans Immobilier

15 min. walk from HEC and 5 min. walk from city center

Private rooms with bathroom and private kitchen / shared rooms with shared bathroom and kitchen

Facilities : Movie room, Gym, Roof top etc.

Rent: approx. 500-600€/month (all included!)

Check it out on [Generation Campus](#)



ACCOMMODATION – CITY CENTER

Eras'must

Rental rooms with different features and in different locations shared with other students

Private or shared bathrooms

Rent: approx.450- 600 €/month **all included (Wi-Fi, TV,...)**

Check it out on [Eras'must](#)



ACCOMMODATION – CITY CENTER

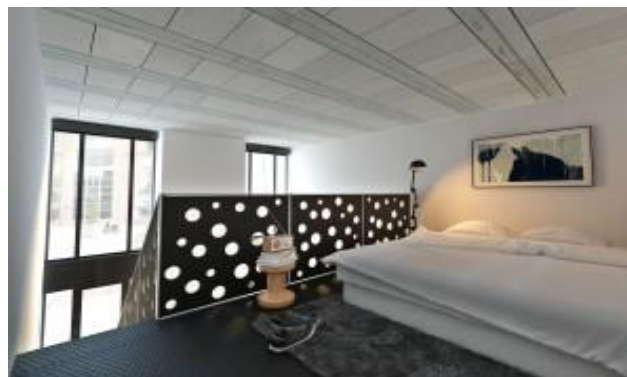
The Student Station

6 min. walk from HEC and 10 min. from city center

Private rooms (20-30m2) with bathroom and with shared or private kitchen

Rent: approx. 450-600€/month **all included (Wi-Fi, TV,...)**

Check it out on [Studentstation](#)



ACCOMMODATION – CITY CENTER



Xior Student Housing

10 min. walk from HEC and from city center

Private rooms with bathroom and with shared or private kitchen

Rent: approx. 420-510€/month **all included (Wi-Fi, TV,...)**

Check it out on [Xior Student Housing](#)



ACCOMMODATION – CITY CENTER

Private accommodation or Kot (with the help of the ESN)

Considering that many students live in Liege, many building-owners offer the possibility to rent kots, private rooms in a house shared with other students. The ESN has a database with such accommodations and helps the exchange students find a place.

Rent : approx. 350-450 €/month

Contact : [ESN HEC](#)



ACCOMMODATION – CITY CENTER

Private accommodation or Kot (with KotàLiège)

Considering that many students live in Liege, many building-owners offer the possibility to rent kots, private rooms in a house shared with other students : <https://www.kotaliege.be/en/>

Rent : approx. 350-450 €/month

kot à Liège Student rooms Studios Flats & Shared Housings Residences Map Student guide Register Log in English

Find your student room in Liege
for Erasmus, interns & international students

Student rooms Studios Shared housings Residences

I am searching for 5-6 months SEARCH New listings Map



Shared housing 90 m²
Botanique / rue Saint-Gilles / ...

370 € excl. charges

17 hours ago

1 Feb



Student room 14 m²
Botanique / rue Saint-Gilles / ...

385 € excl. charges

17 hours ago

Available



Student room 12 m²
Saint-Laurent / Sainte-Margu...

340 € excl. charges

21 hours ago

15 Dec



Student room 35 m²
Botanique / rue Saint-Gilles / ...

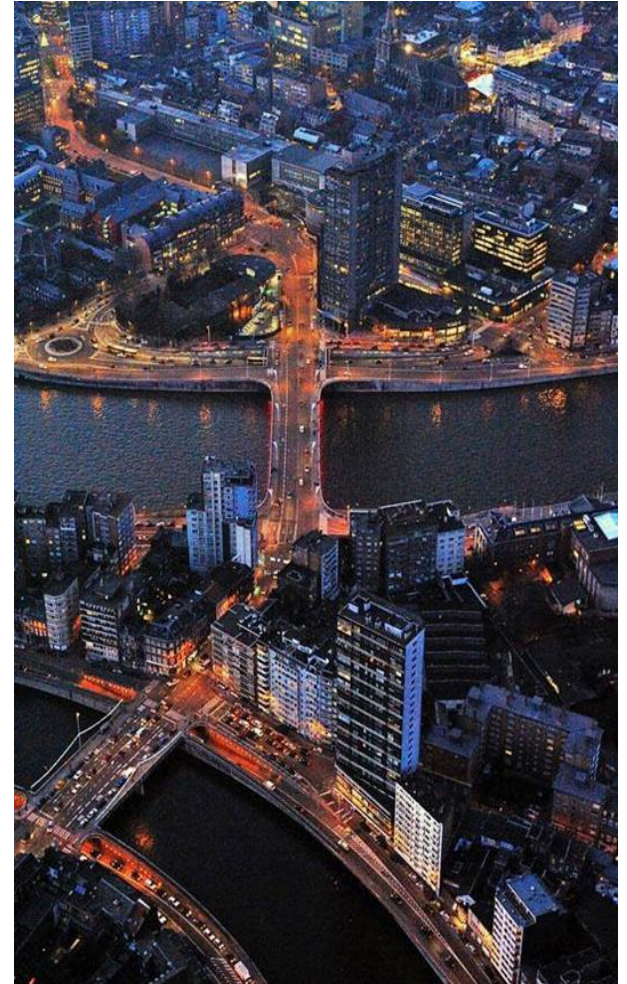
370 € excl. charges

21 hours ago

Available

THE CITY OF LIEGE

- 1000 years old
- History and Modernity
- 200,000 inhabitants
- Industrial past
- Multicultural city



FALL SEMESTER HAPPENINGS



LES FÊTES DE WALLONIE



FALL SEMESTER HAPPENINGS



ENTERTAINMENT FAIR
ON THE BD AVROY



Lacquemants ou croustillons ?

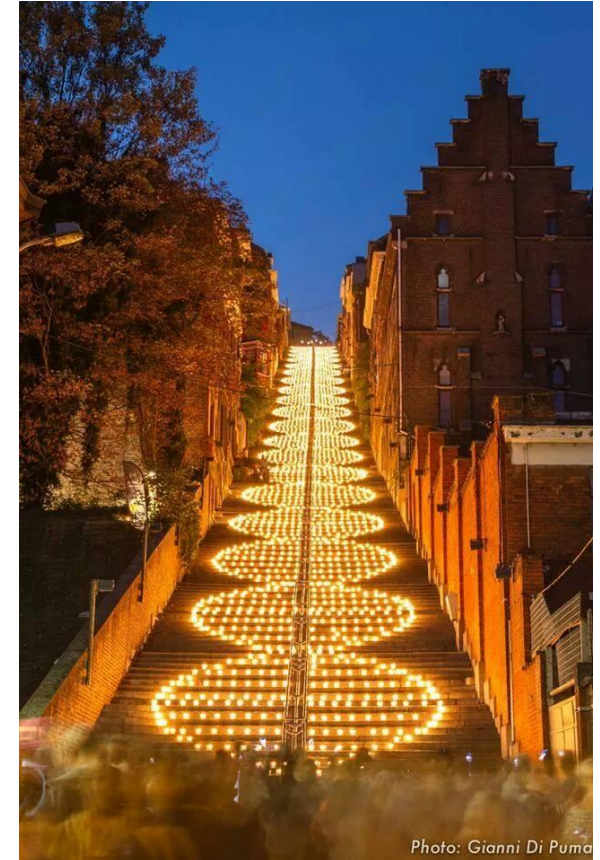


Photo: Gianni Di Puma

LA NUIT DES COTEAUX

FALL SEMESTER HAPPENINGS



CHRISTMAS
MARKET

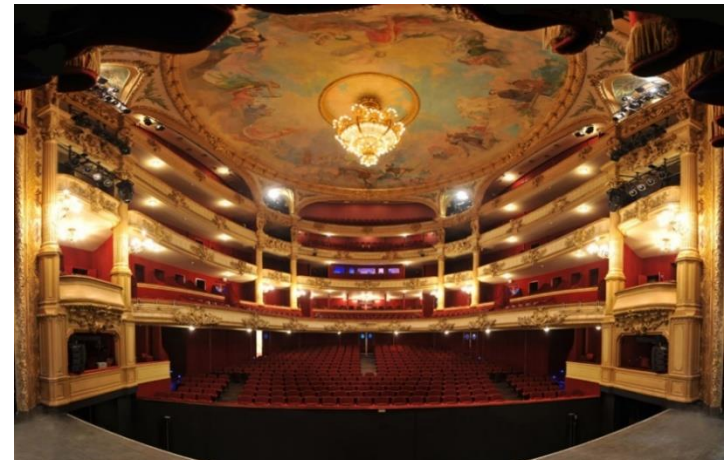


SPRING SEMESTER HAPPENINGS



CARNIVALS

ALL YEAR AROUND



THÉÂTRE DE LIÈGE

OPÉRA ROYAL DE WALLONIE



ALL YEAR AROUND



- La Batte market on sunday morning
- Concerts
- Fête de la musique
- And so much more...

GASTRONOMY



GOOD FOOD QUALITY

NATURAL HOME-GROWN PRODUCTS



GASTRONOMY



LIVING EXPENSES

- Soda, beer : 3€
- Waffles : 3€
- Sandwich : 4-5€
- Pizza : 12-15€
- Bus ticket : 3€
- Bread (400 gr) : 2,50€



Restaurant

Food and drink : 30€

Living expenses

600 €/month

YOUR CONTACT PERSON

Anne GILLET

Head of International Relations

Anne.Gillet@uliege.be

Tél : +32 4 232 72 13

<http://www.hec.uliege.be>



LOOKING FOR MORE INFORMATION?

Check out the HEC Liège official website for more information:

<http://www.hecliege.be/en/international>

Visit our Instagram account:

www.instagram.com/hecliege_international/

